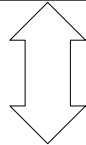


# PENN DATA WAREHOUSE LANDSCAPE, OCTOBER 2016



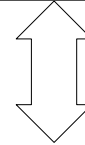
Individual access to data:

**BusinessObjectsBI4**  
InfoView & Web Intelligence;  
Crystal Reports (ATLAS Reports only)



Universe Layer provides access to data collections

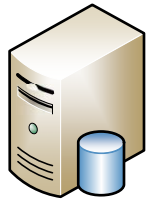
**QlikView**  
interactive analysis & visualization  
*\*migration to QlikView 12 Fall 2016*



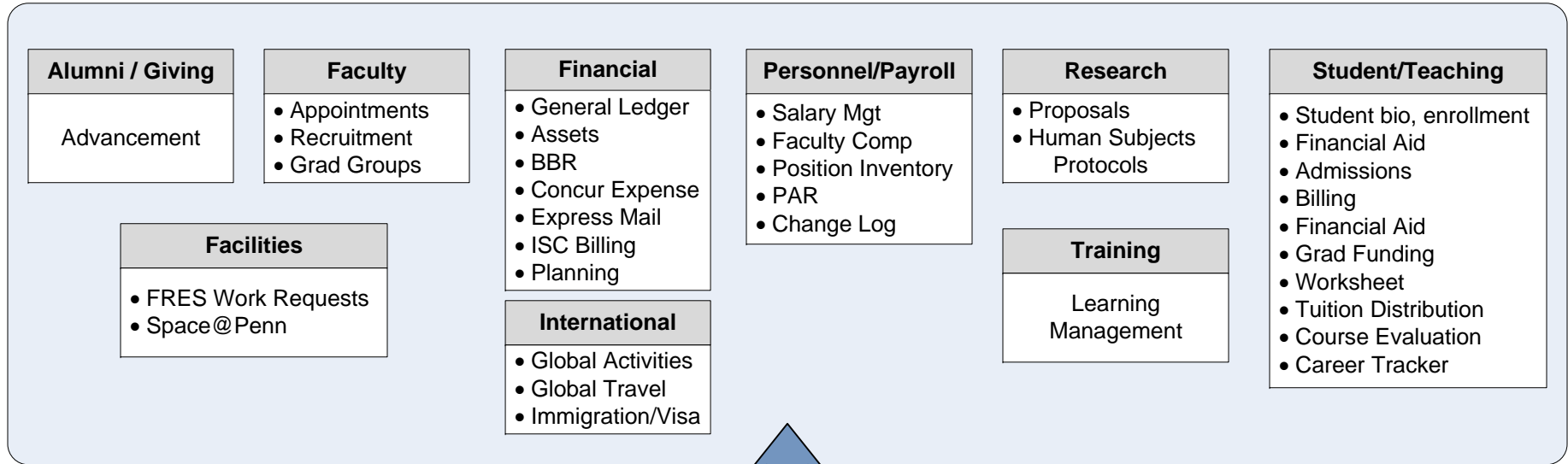
Extracted data optimized for in-memory use and associative relationships

Authorized users may use **other tools** to program their own queries from any data collection

SQL/ODBC  
↑  
↓



Data Warehouse Collections:



As of Jan 2016:  
Oracle 12c,  
Linux, Unicode

Extract, Transformation & Load processing –

– daily, periodically, or other process-based



Source Systems:

**Alumni/Giving:**

ATLAS

**Facilities:**

AiM (FRES work orders)  
Space@Penn

**Faculty:**

FIS (Faculty Information System)  
Faculty Search (People Admin)

**International:**

GAR (Global Activities Registry)  
Global Travel (travel reservation)  
iOffice (student/scholar immigration)

**Financial:**

BEN (Oracle Fixed Assets & GL)  
BBR (grants billing / receivables)  
Concur Expense  
UPS Express Shipping  
ISC Billing (mainframe, network, telecom)  
Planning (Hyperion RevExp & Salary)

**Identity Management:**

Penn Community (Penn ID)  
Online Directory (email)  
Penn People (race/ethnicity)

**Personnel/Payroll:**

PennWorks (bio, roles, faculty comp)  
Payroll (mainframe)  
Position Inventory

**Research:**

PennERA (proposals, protocols)

**Training:**

Knowledge Link (learning mgt)

**Student/Teaching:**

Pennant (student billing; grad funding)  
SRS (mainframe registration)  
SAM (mainframe student aid mgt)  
OASIS (undergrad admissions)  
Apply Yourself (grad admissions)  
Penn Course Evaluation  
AdvisorInTouch  
REQBUILD (worksheet requirements)  
SAS Career Tracker