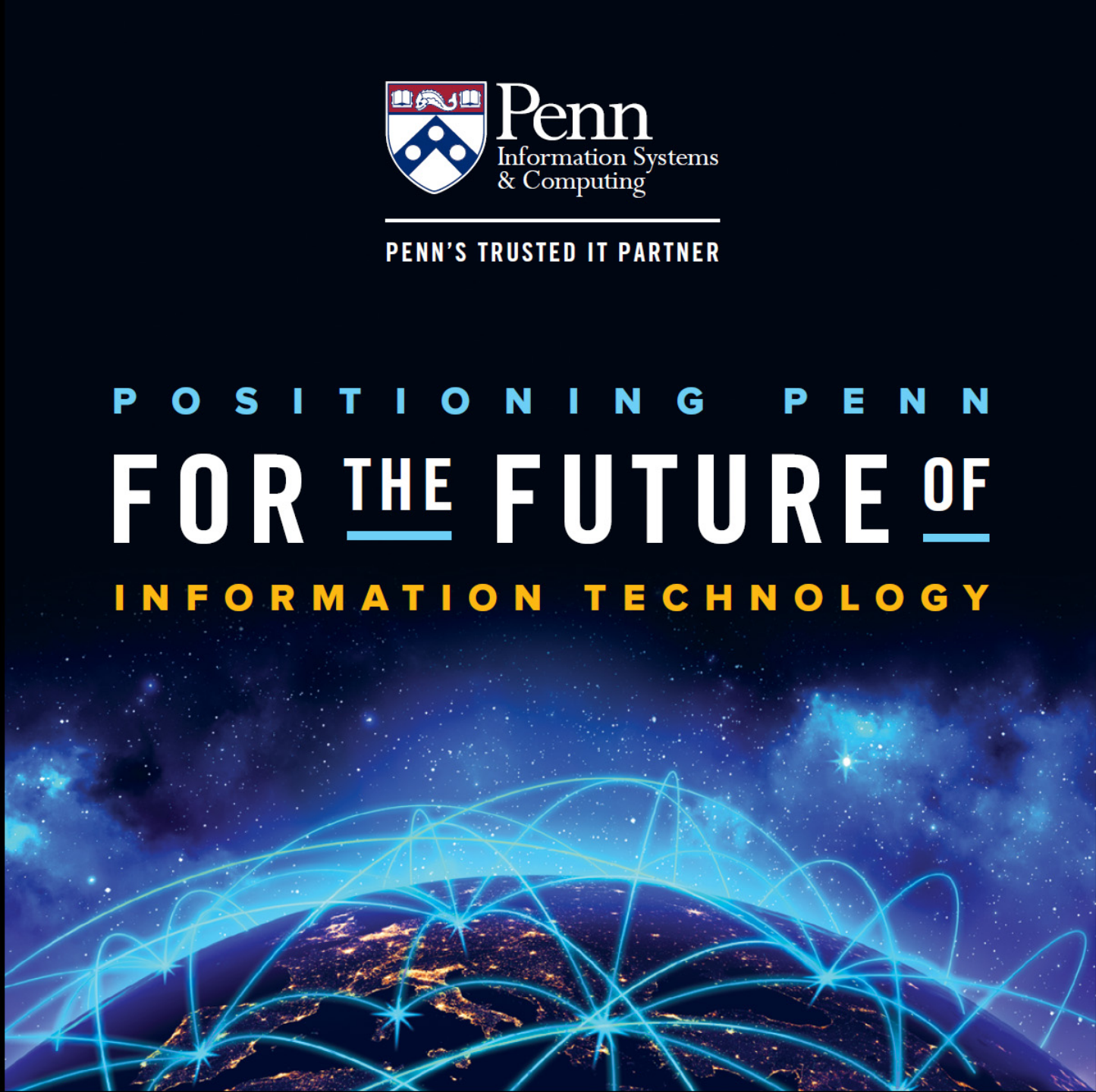


PENN'S TRUSTED IT PARTNER

POSITIONING PENN
FOR THE FUTURE OF
INFORMATION TECHNOLOGY





Penn



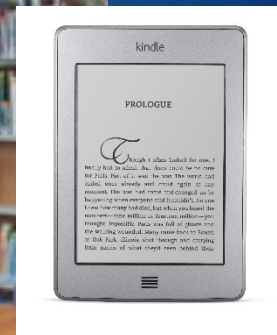
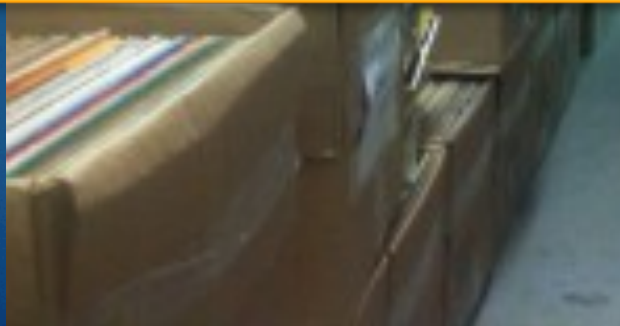


Penn



Penn
Information Systems
& Computing

3





Behavioral & Cultural Change

Traditional IT

- ▶ Adapt software to the people & processes (customize)
 - Controlled & lengthy enhancement and upgrade processes
 - Need 100% of desired functionality – try to be perfect and complete
 - Local support – IT staff watching the blinking lights
 - Capital intensive model

IT As A Service

- ▶ Adapt people & processes to the service (DON'T customize)
 - Rapid & iterative improvements and replacement, without local intervention
 - 80% is good enough – common solutions, fast & lightweight
 - Vendor support – limited ability to manage locally
 - Operating expense model



Resistance Is Futile!

- The industry is moving rapidly to “IT As A Service”
- We will not have a choice in the future
- Penn is already moving in this direction
- We need to get good at this
- Big cultural change – practice practice practice
- Speed, flexibility, agility



ISC's Response – Cloud First

Our Vision:

To position Penn for the future of IT systems & services by pursuing a “Cloud First” strategy to accelerate the speed of delivery and to drive more value through technology to the Penn Community.

Our Goals:

- Help Penn to thrive in the dramatically changing technological landscape – new learning & education delivery models, research models, security and business on demand.
- Provide new and innovative ways to deliver IT in support of Penn's mission, while leveraging industry solutions, in a way that provides scalability, agility, efficiency, staff development, and risk management.



Cloud First

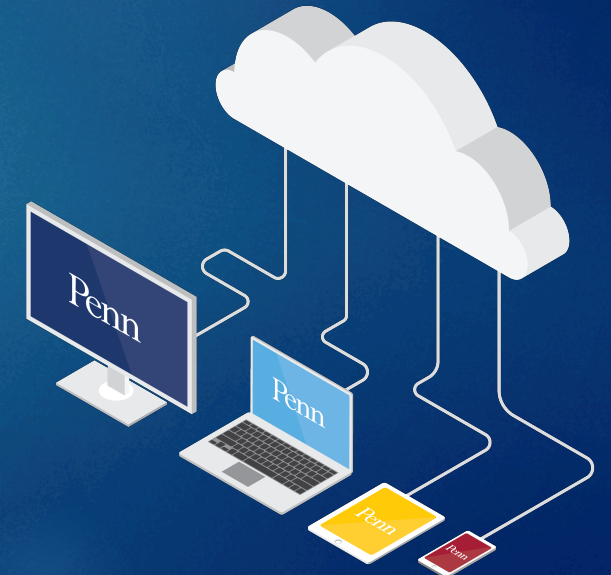




Program Metrics

Metrics

- ▶ Finish creating and testing environments: Through 9/30/2016
- ▶ Beginning 10/1/2016 move test and development workloads to Amazon Web Services
 - Targets for 6/30/2017:
 - 75% of test and development workloads
 - Stretch target: 100% of test/development
 - 25% of performance environments
 - 10% of production environments





Program Metrics

Identify suitable SAAS candidates in conjunction with application rationalization, ISC Survey, AIS and TS input

- ▶ Target for 9/30/2016:
 - Identify six candidates
 - Stretch: Identify eight candidates
- ▶ Target for 6/30/2017:
 - Migrate six applications
 - ACD, Panopto, Shadow Planner, Workflow

